

## Inet Seasoninterface Installation Upgrade and Configuration V 1.0

1. Connect your Interface to your router and a 7.5 powersupply. (normal powersupply, just like the ones you use for your programmers)  
- outside  
+ inside

2. Download the deviceinstaller.

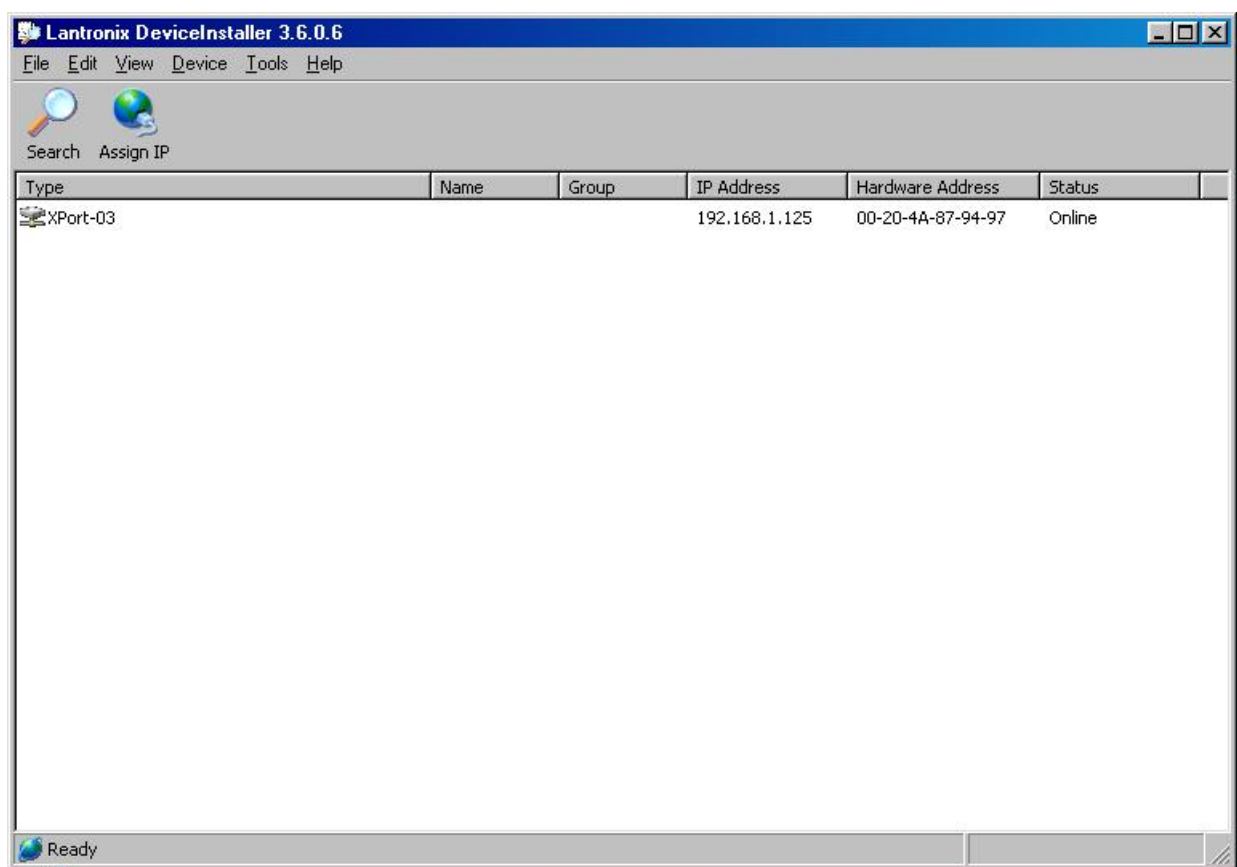
[http://www.lantronix.com/ftp/DeviceInstaller/for\\_XPort/XPort\\_DeviceInstaller\\_3606.zip](http://www.lantronix.com/ftp/DeviceInstaller/for_XPort/XPort_DeviceInstaller_3606.zip)

3. Download dotnetfx incase this is not installed on your pc!

[http://itxfaq.custhelp.com/cgi-bin/itxfaq.cfg/php/enduser/fattach\\_get.php?p\\_sid=520AJAUh&p\\_tbl=9&p\\_id=908&p\\_created=1064870655](http://itxfaq.custhelp.com/cgi-bin/itxfaq.cfg/php/enduser/fattach_get.php?p_sid=520AJAUh&p_tbl=9&p_id=908&p_created=1064870655)

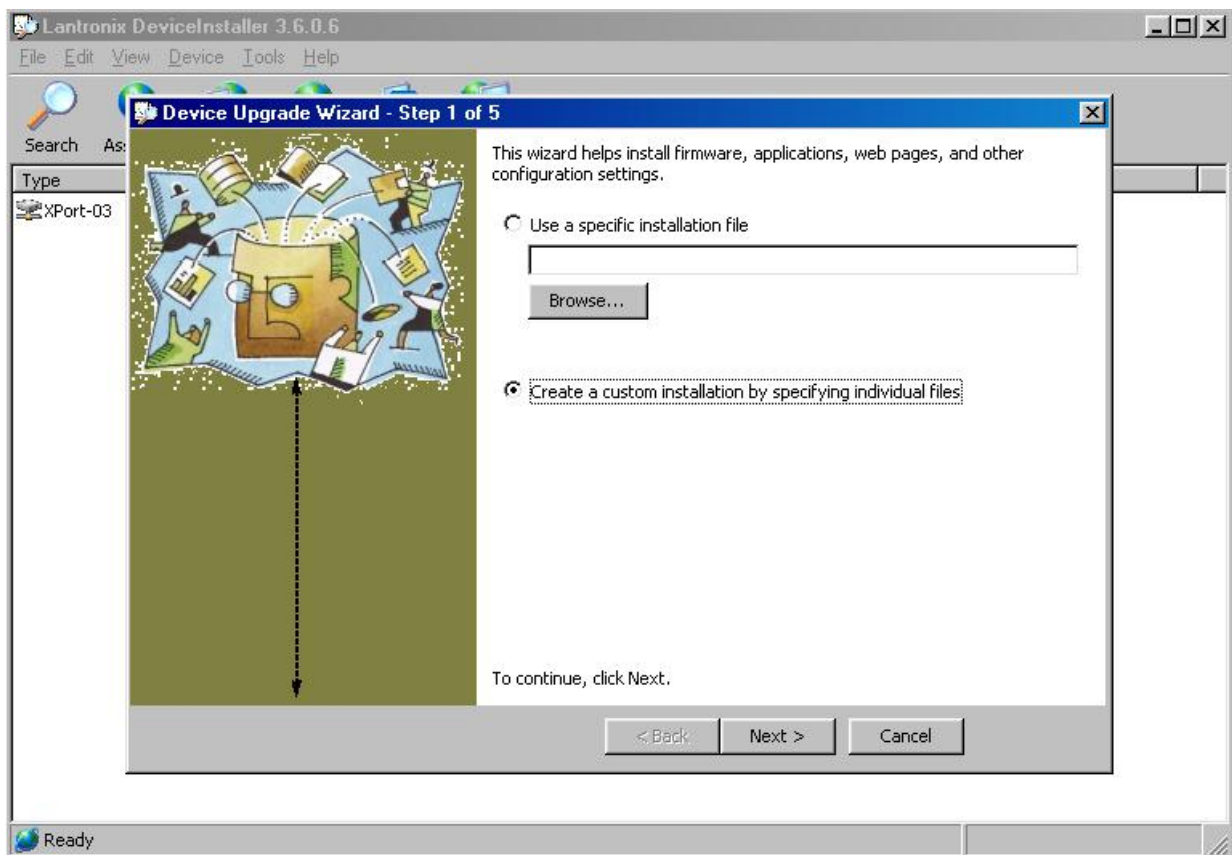
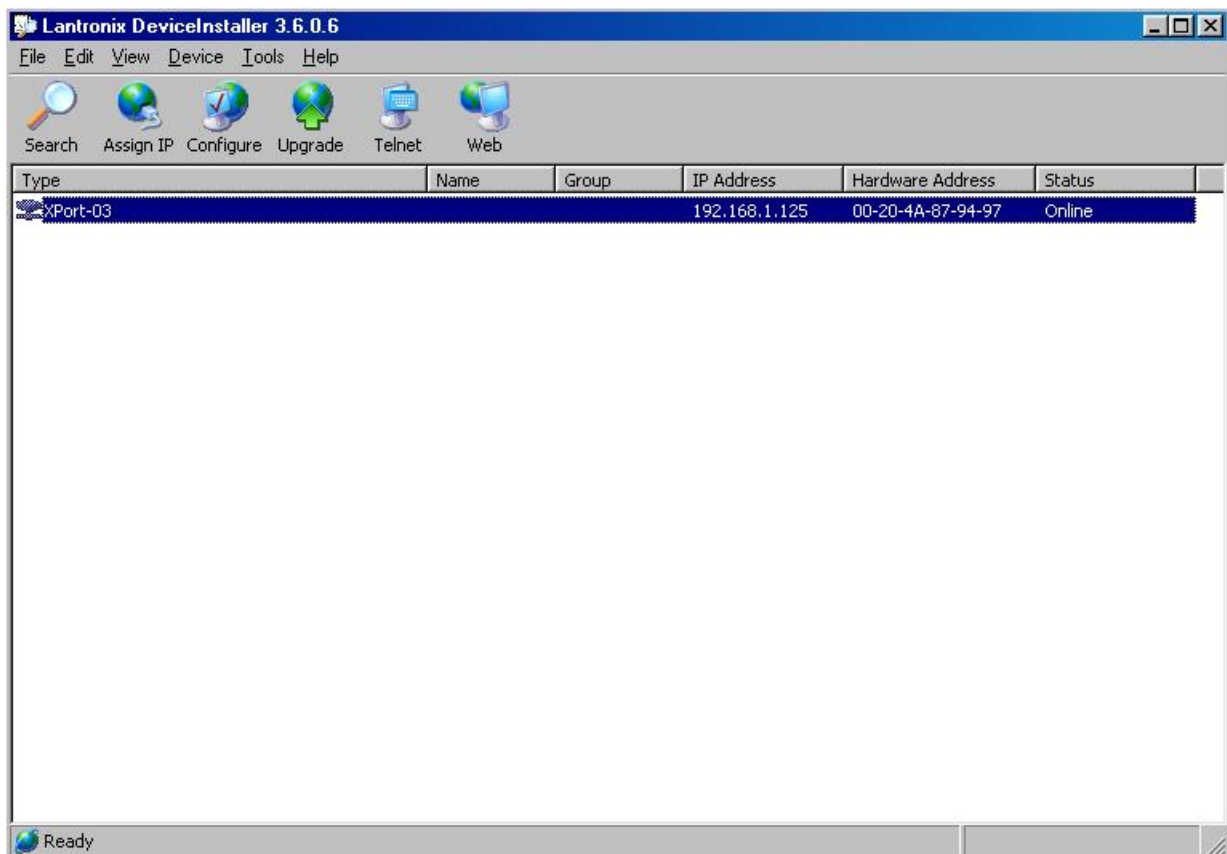
Install both and then bootup the device.

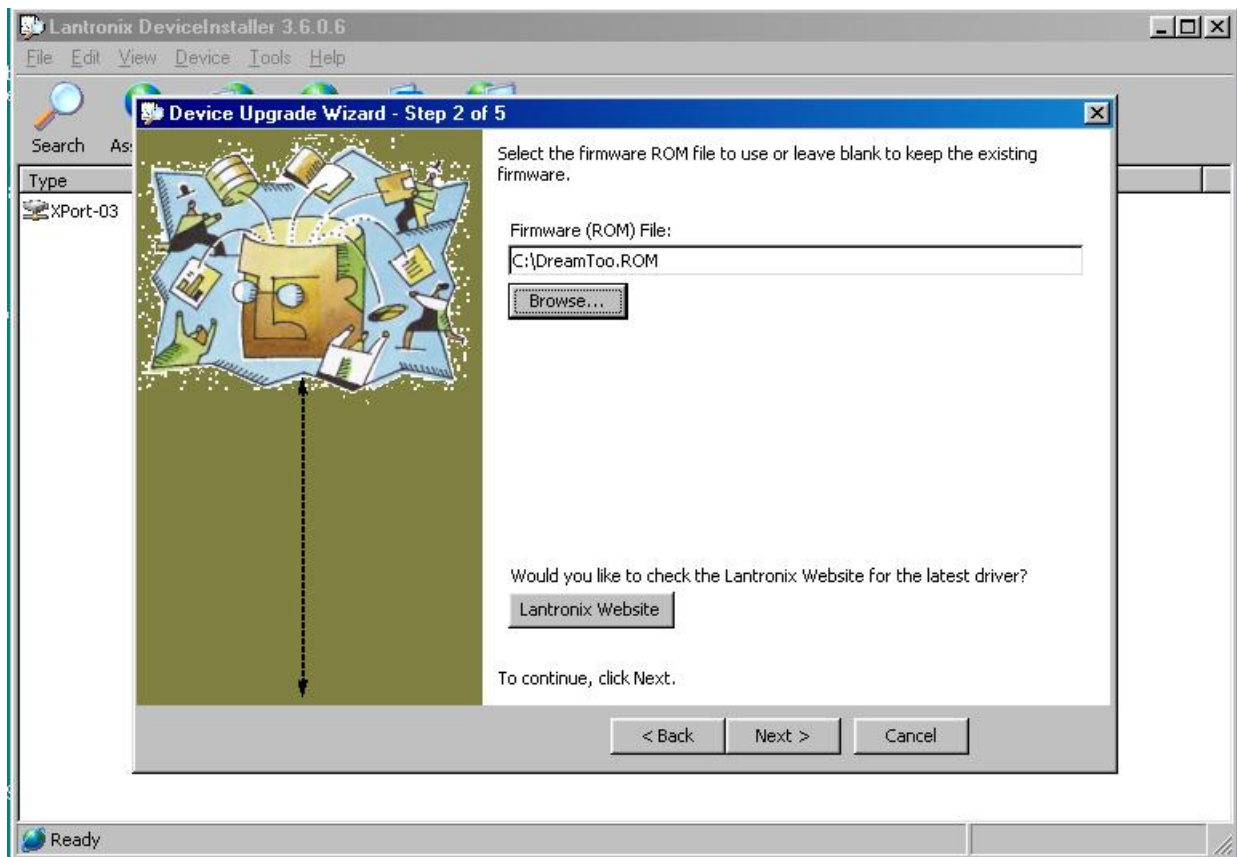
As soon the device is up you should see the green lights on the xport, press Search and wait untill a line appears like on the following picture! **Be aware that you remember the IP because DHCP is preconfigured, you can change this later!**

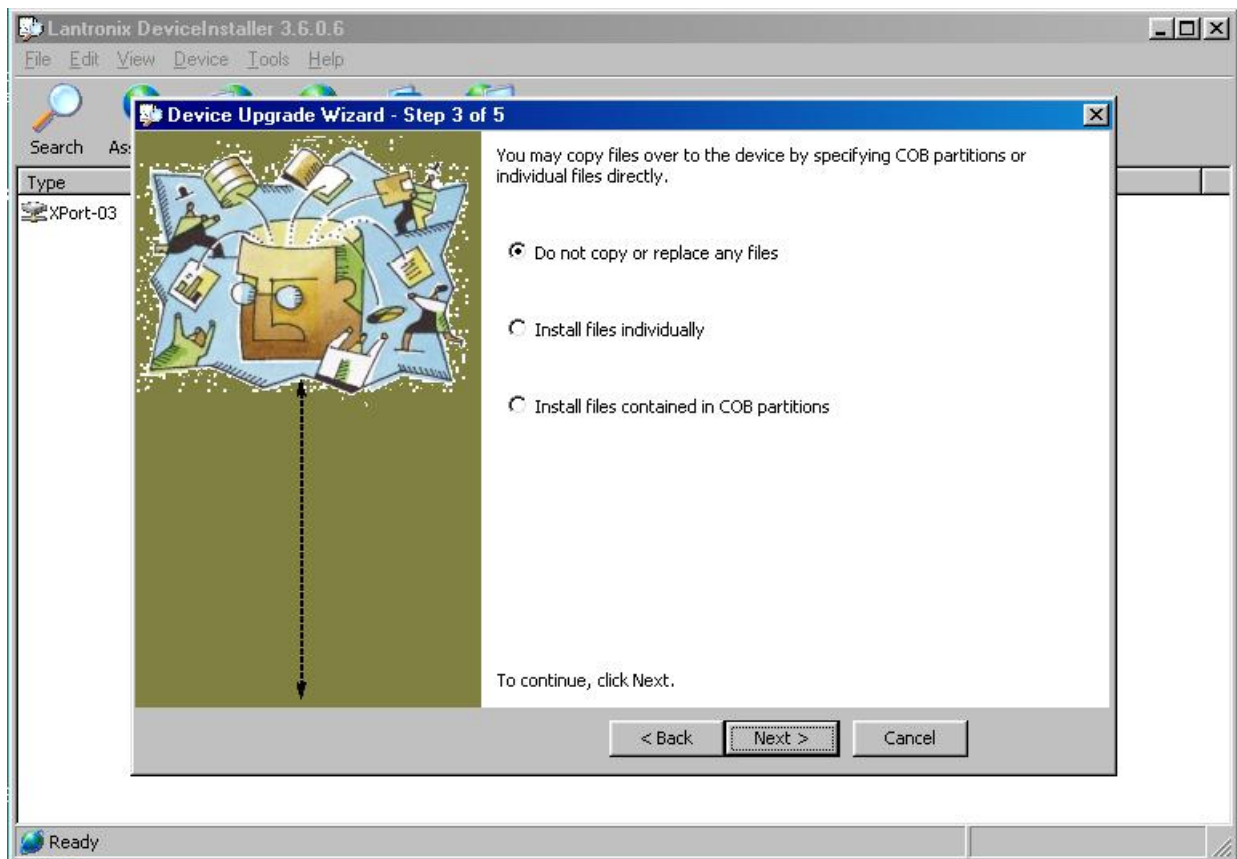


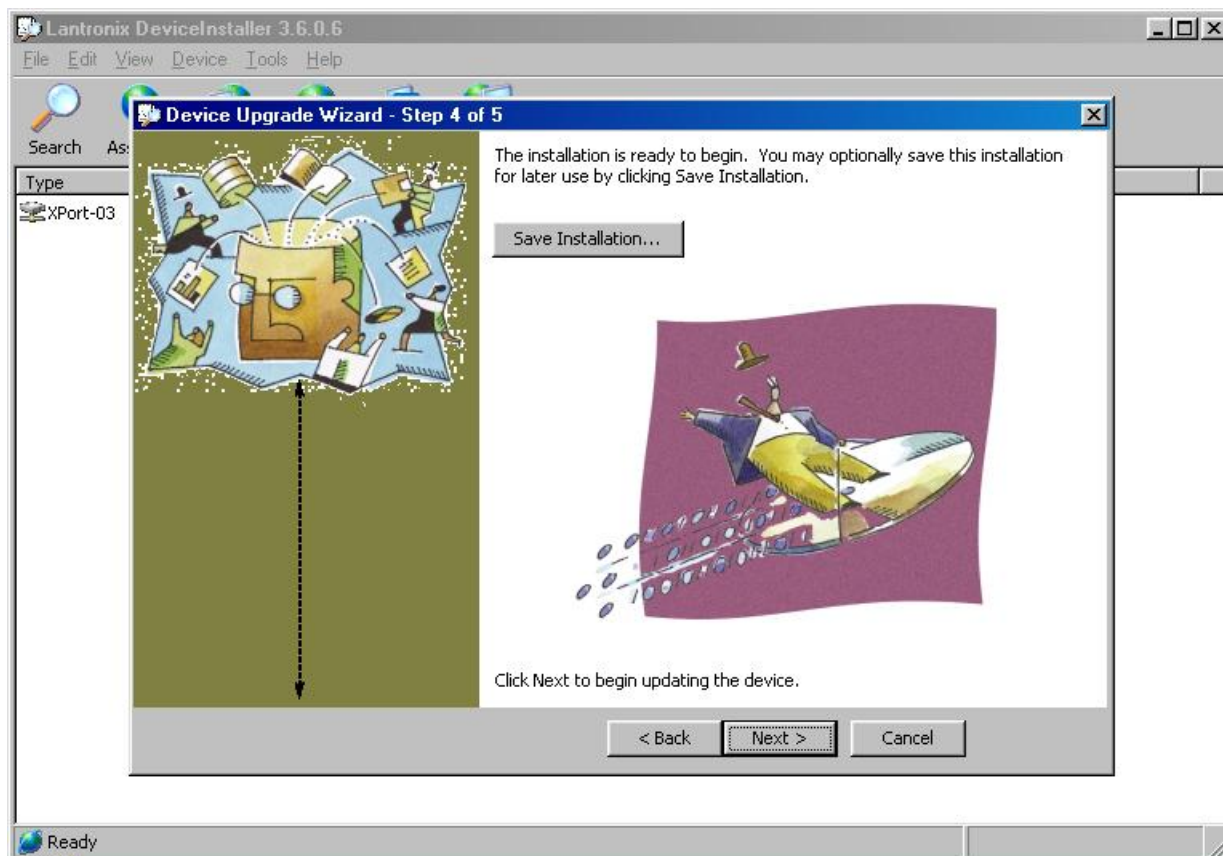
Klick on the line twice like on the following picture and you will see that some buttons will appear!  
Don't press on any of the buttons, only use **THE UPGRADE BUTTON!**

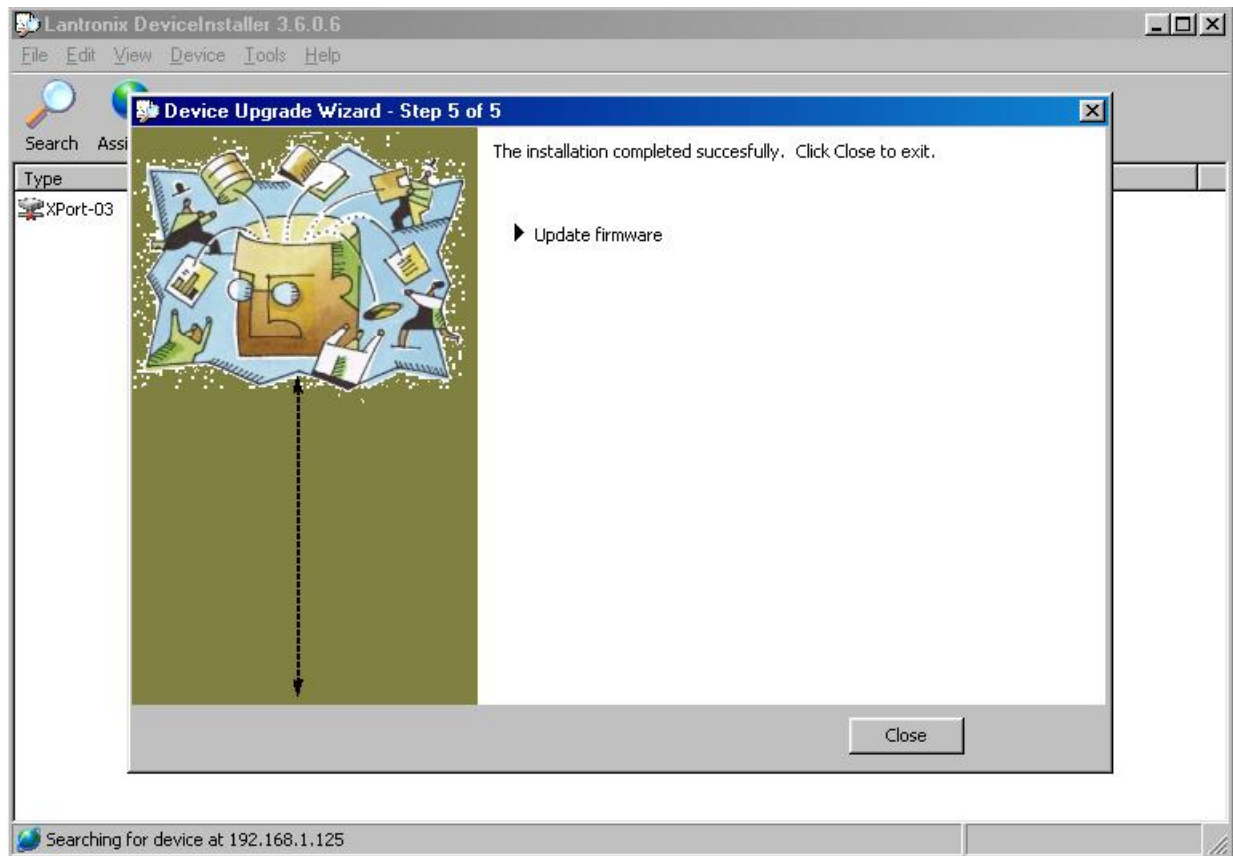
The following pictures will show you exactly how to upgrade, after that we start with the configuration.  
Use the dreamtoo.com which is added to this archive.











So far so good congratulations, you upgraded the device perfectly now we start with configuration, in this case only an example for NDS and NAGRA ALLADIN.

Reboot the device by disconnecting and connecting the powersupply and wait about 10 seconds untill the device is up.  
There are to ports available, 18081 and 18082

18081 is needed for configuration, 18082 you can see some nice infos about the ecm's, both ports you can acces via telnet.

Lets start!

Usage: telnet 192.168.1.125 18081

A prompt and a password is needed, standard password is "irdeto" , change this later so that nobody can acces from outside to the device.

Enter the password and press C, the following menu will appear:

```
C:\ Telnet 192.168.1.125

Password: *****
Welcome to Inet-Device Client v1.0a 15-11-05
ISO      : ATR sent
System   : Entering setup

Inet-Device Client v1.0a 15-11-05
My IP: DHCP
CAM Protocol: Irdeto
CAM Type: Humax
Baudrate: 9856,8,N,1
Server name: inet.kicks-ass.to
Server TCP port: 678
Options:
 1 Network config
 2 CAM config
 3 Radegast config
 4 Irdeto provider config
 8 Exit without save
 9 Save config
Enter selection:
```

This is the mainmenu of the Inet Seasoninterface, the data which you see here is only a sample, don't try to connect to that servername, you need a radegast or in future a own newcamd server, like a dreambox or a linuxserver to connect to.

The following picture shows you how to change DHCP to a own IP by entering option 1 on your keyboard.

```
C:\ Telnet 192.168.1.125

My IP: DHCP
CAM Protocol: Irdeto
CAM Type: Humax
Baudrate: 9856,8,N,1
Server name: inet.kicks-ass.to
Server TCP port: 678
Options:
 1 Network config
 2 CAM config
 3 Radegast config
 4 Irdeto provider config
 8 Exit without save
 9 Save config
Enter selection: 1

My IP <0.0.0.0 for DHCP>: <000> 192.<000> 168.<000> 1.<000> 115
Gateway <Y> ?
Gateway IP: <192> .<168> .<001> .<001>
Netmask: <255> .<255> .<255> .<000>
DNS server: <192> .<168> .<001> .<001>
Change password? <N> ? Y
New password: *****
Re-enter password: *****
Password changed
```

If you enter 0.0.0.0 then DHCP is activated, otherwise you can use your own data and give the device an own IP, be aware that you must enter your Gateway, Netmask and DNS correctly when you switch off DHCP!

In this menu you can also change the password.

In the next menu we show you how you can configure the protocoll, this I also very simple by using option 2 on your keyboard.

As you can see you can choose 3 different protocols at the moment:

Irdeto  
Seca  
Conax

If you want to use an other receiver or cam which is not listed in the menu you can enter them via option 0  
If you need some baudrates you can find them here:

<http://members.fortunecity.com/rtpc/page/wallbanger2.html>

I think for the rest is no explanation needed, look and try by yourself.  
Costumized baudrates will work only when the cam works like a humax or a cam which is listed, the cam must understand the commands also.

```
c:\ Telnet 192.168.1.125
Enter selection: 2

CAM Protocols:
1: Irdeto
2: Seca
3: Conax
Select CAM protocol <Irdeto>: 1
CAM Options:
0: Custom
1: Humax
2: EuroIrdeto
3: FreeCAM
4: Irdeto w/Premiere
5: IceCrypt/Joker
6: *Matrix Reloaded/MR1.130
7: *AlphaCrypt
8: *Irdeto SE 4.70
9: **Dbox2
10: **Dbox1
11: **UCAS
Select CAM Type <Humax>:
```

The radegastconfig option 3 should be very simple here a screenshot.

If you don't use an ip then simply enter 0.0.0.0, you will be asked for a hostname, like shown in the following screenshot:

```
c:\ Telnet 192.168.1.125
Enter selection: 3

Radegast server IP <0.0.0.0 to use name>: <000> .<000> .<000> .<000>
Radegast server name <inet.kicks-ass.to>:

Radegast server TCP Port <678>:

Inet-Device Client v1.0a 15-11-05
My IP: 192.168.1.115
Gateway: 192.168.1.1
Netmask: 255.255.255.0
DNS Server: 192.168.1.1
CAM Protocol: Irdeto
CAM Type: Humax
Baudrate: 9856,8,N,1
Server name: inet.kicks-ass.to
Server TCP port: 678
Options:
1 Network config
2 CAM config
3 Radegast config
4 Irdeto provider config
8 Exit without save
9 Save config
Enter selection:
```

Now we come to the most important part, the irdeto provider config.

Here you can enter CAID, LENGTH AND CHID of the provider you want to share.

In this case I configured Sky Italy NDS with CAID 0919 and Premiere with CAID 1702 for use in a humax internal cam.

```
CA Telnet 192.168.1.125
Irdeto provider table:
1: CAID 0919: ECM Len 113 000 000, CHID 0B68 0B69 0000 0000 0000 0000
2: CAID 1702: ECM Len 085 000 000, CHID 0001 0000 0000 0000 0000 0000
3: CAID 0000: ECM Len 000 000 000, CHID 0000 0000 0000 0000 0000 0000
4: CAID 0000: ECM Len 000 000 000, CHID 0000 0000 0000 0000 0000 0000
Edit provider <1-4, 0 to quit>: 1
Editing Irdeto provider
0 in any field disables matching
1: CAID 0919
2: ECM Lengths 113 0 0
3: CHIDs 0B68 0B69 0000 0000 0000 0000
Select or 0 to quit: 2
Edit ECM Length 1:113 2:0 3:0, 0 to quit: 2
Enter new ECM length 2 for CAID 0919 <0> ? 118
Edit ECM Length 1:113 2:118 3:0, 0 to quit: 0
Editing Irdeto provider
0 in any field disables matching
1: CAID 0919
2: ECM Lengths 113 118 0
3: CHIDs 0B68 0B69 0000 0000 0000 0000
Select or 0 to quit: 3
Edit CHID 1:0B68 2:0B69 3:0000 4:0000 5:0000 6:0000, 0 to quit: 3
Enter new CHID #3 for CAID 0919 <0000>: 106A
Edit CHID 1:0B68 2:0B69 3:106A 4:0000 5:0000 6:0000, 0 to quit: 
```

In the next screenshot I added a new length for Sky and the current CHID

```
CA Telnet 192.168.1.125
Irdeto provider table:
1: CAID 0919: ECM Len 113 118 000, CHID 0B68 0B69 106A 0000 0000 0000
2: CAID 1702: ECM Len 085 000 000, CHID 0001 0000 0000 0000 0000 0000
3: CAID 0000: ECM Len 000 000 000, CHID 0000 0000 0000 0000 0000 0000
4: CAID 0000: ECM Len 000 000 000, CHID 0000 0000 0000 0000 0000 0000
Edit provider <1-4, 0 to quit>:
```

It is possible to add for example Viasat NDS or BskyB NDS, if you don't know the length and chid, simply add first the CAID, reboot the device switch to the channel you want to share and login to the device via telnet again!

Usage : telnet 192.168.1.125 18081

Put the interface in your humax or dbbox or goldbox or what ever, in the logwindow will appear the Length and the CHID.